

Brief Update on S OLT Energy Technology

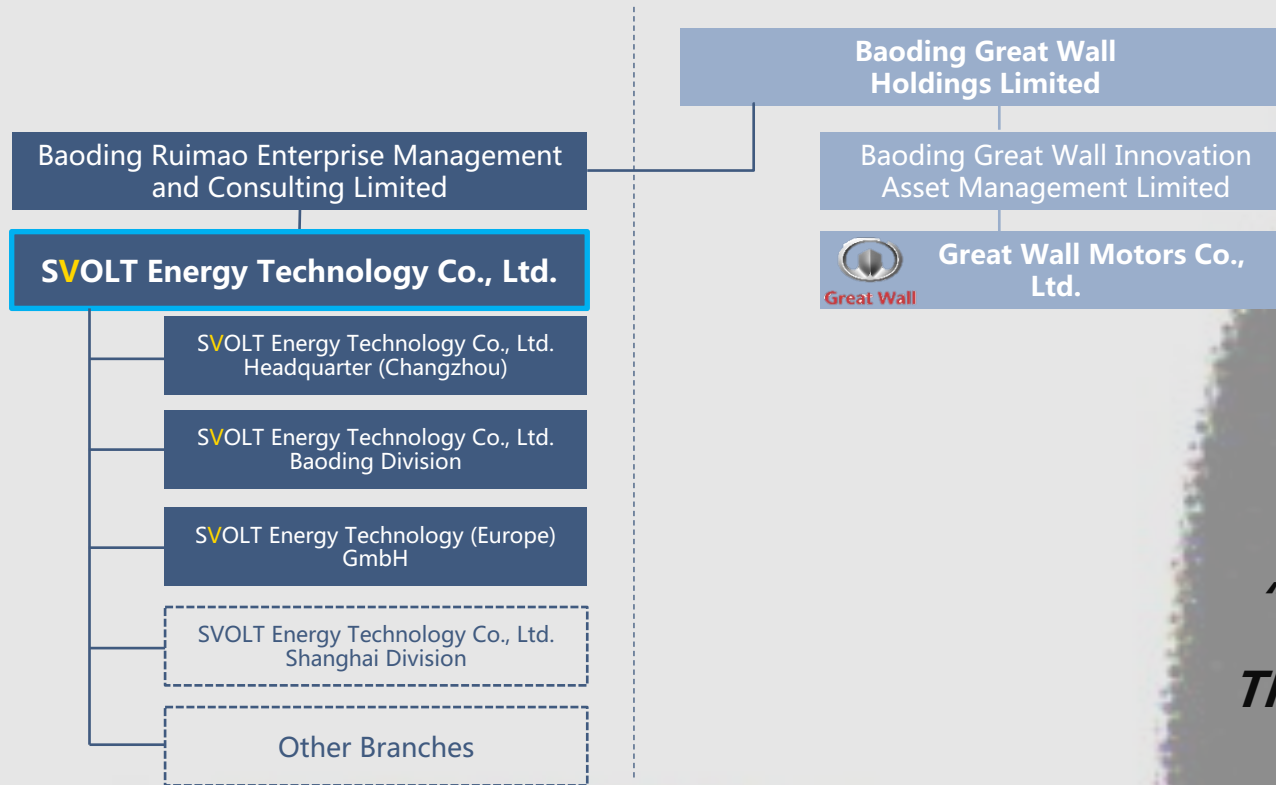
NAATBatt Annual Meeting & Conference
February 11 – 13, 2020

Jeff Yambrick
Vice President of International Sales & Marketing and Business
Development



THE BIRTH OF SVOLT ENERGY TECHNOLOGY

Focus on the Battery Industry



“The Automotive Industry is Going Through an Unprecedented Transformation”

FAST GROWING R&D Facilities in Baoding (addit. facility located in Wuxi)

- Baoding R&D: From Nov. 2016
Area: 7.04 Hectares
Investment: 700 Million CNY
- Wuxi R&D: Under Construction
Investment: 1 Billion CNY
 - ✓ Solid State
 - ✓ Solar
 - ✓ ESS
 - ✓ Pouch Cell

Key Figures

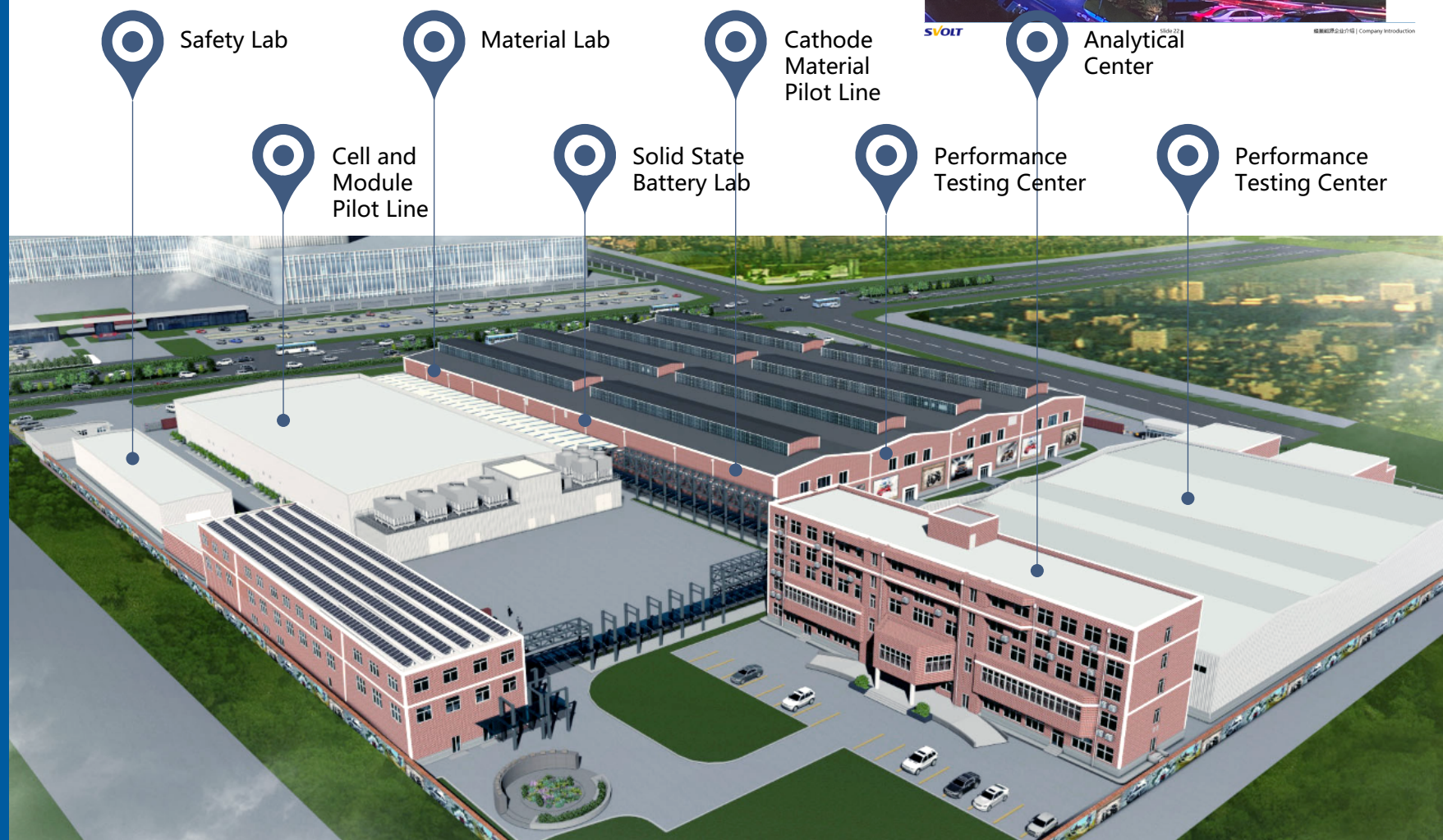
2200
Staff
(2019. Q2)

1,100
R&D Talents
(2019. Q2)

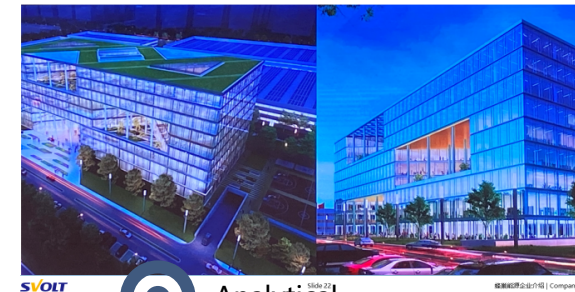
>350
Foreign/Experienc
ed
Industry Experts
(2019. Q2)

>2.93
Billion
CNY
R&D Investment
(2016-2020)

>26 Billion
CNY
Manufacturing
Facility Investment
Till 2025

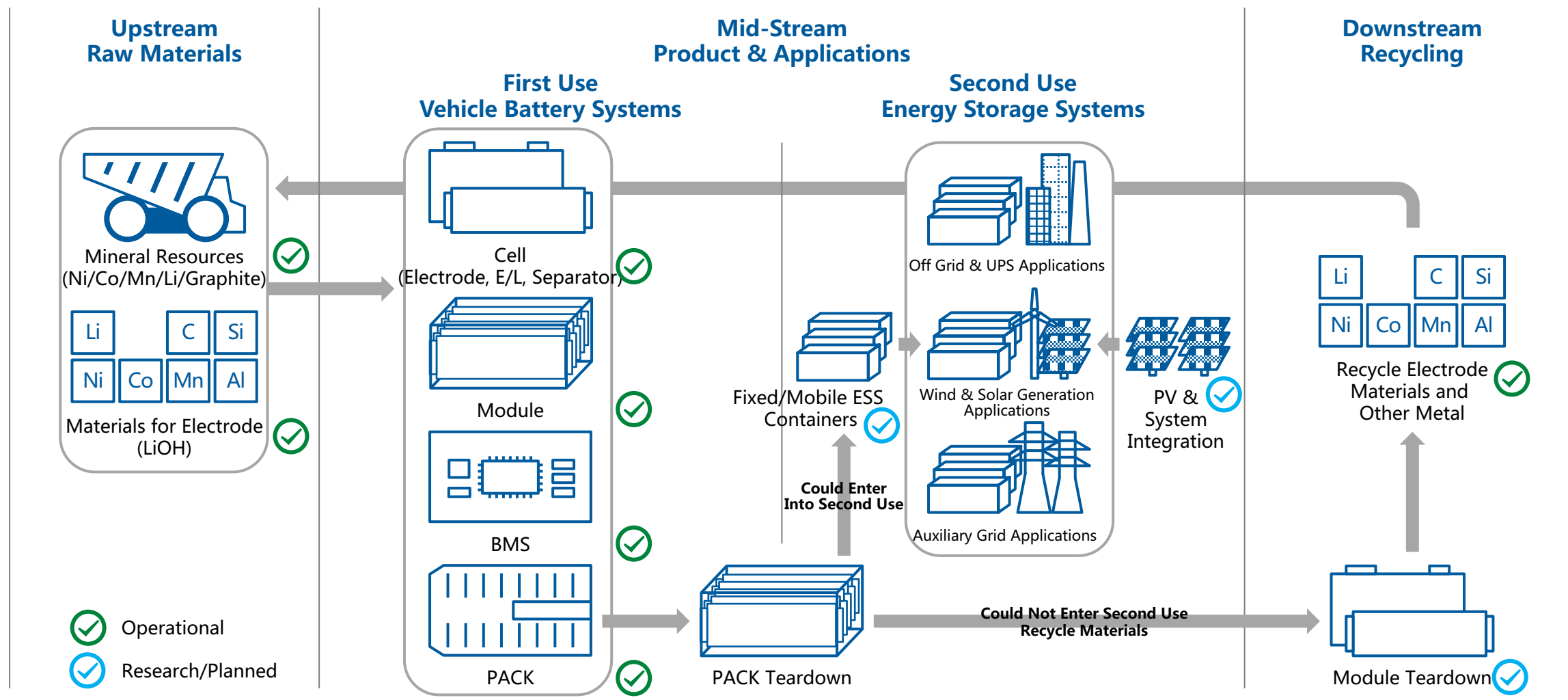


NEW R&D CENTER IN WUXI (H2 2020)
Will become R&D HQ



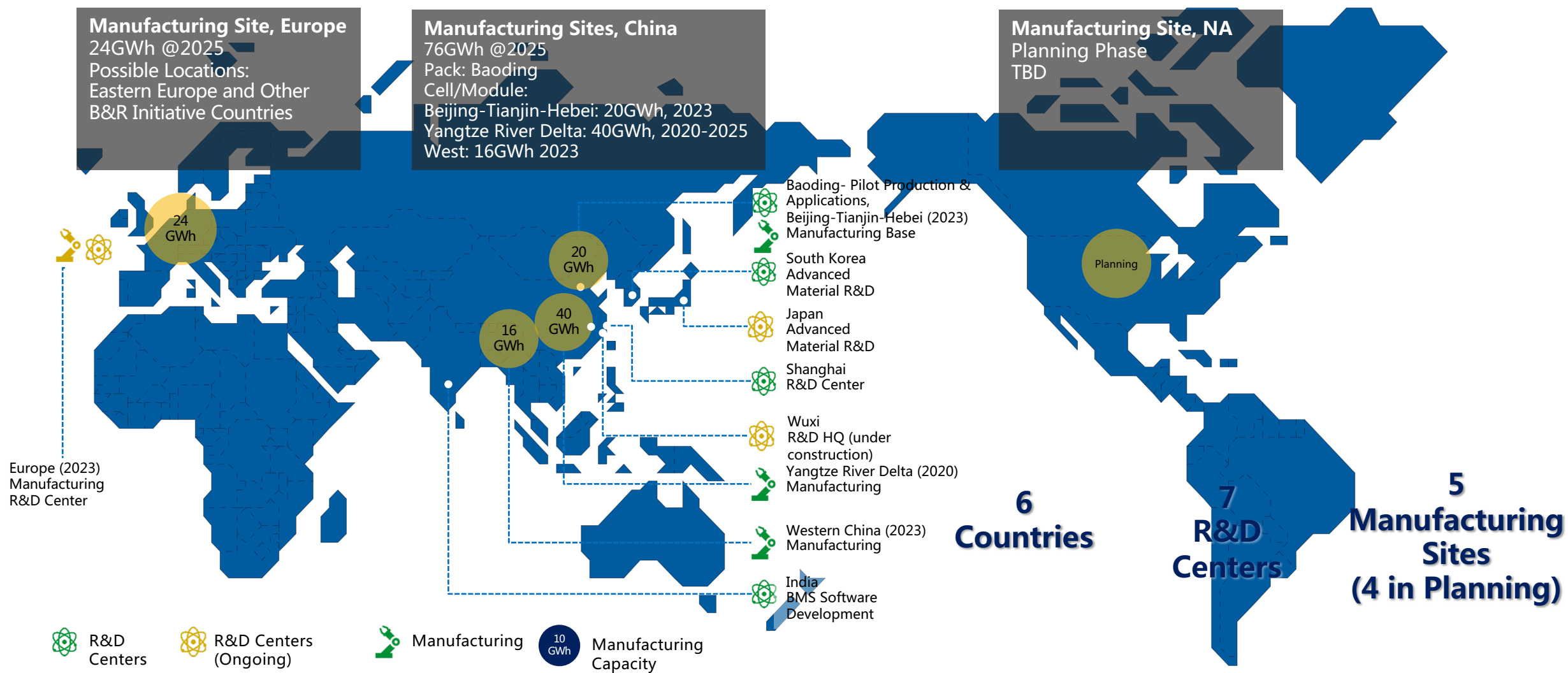
CREATING THE NEW ENERGY ECO-SYSTEM

Complete Supply Chain Integration



SVOLT ENERGY TECHNOLOGY

Global Presence and Planning



LEADING INTELLIGENT AI MANUFACTURING

Changzhou Battery Plant

Grand Opening in 2019



Total Manufacturing Capacity in China



- 2025 Capacity 76 GWh
- Cumulated Investment: 26 Billion CNY

Changzhou Plant Brief

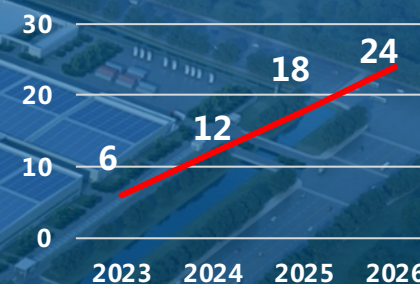
- Area: 54 ha
- Investment: 10 Billion CNY
- Expected Revenue: 20 Billion CNY
- Intelligent Manufacturing
- Phase I + Phase II: 10 GWh
- Phase III: 8 GWh

LEADING INTELLIGENT AI MANUFACTURING

EU Battery Plant

2 bn€ Invest
24 GWh Capacity

Capacity GWh



EU Plant Brief

- Area: ~60 Hectares
- Investment: 2 Billion EUR (2.24 Billion USD)
- Planned Capacity: 24GWh
- Kickoff: Q4 2020
- Phase I SOP 6GWh: Q1 2023
- Phase II – II- IV according customer demand
- Battery R&D Center
- Cathode Material Production Plant
- High Speed Stacking Technology
- Flexible Line
- AI Systems